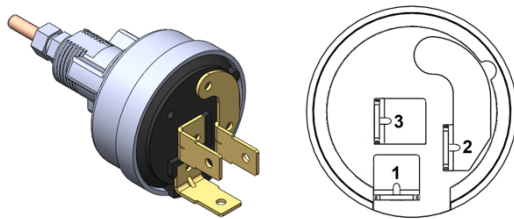




## MF0022 – EJ EH HOLDEN 2 SPEED WIPER SWITCH

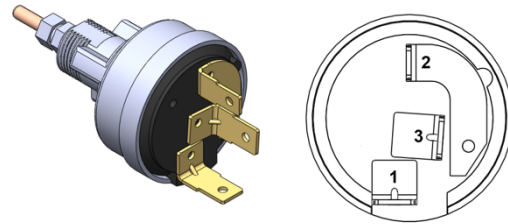
This switch is the only brand new replacement switch for the EJ EH 2 speed wiper switch. The physical dimensions and internal switching is the same as the original EJ EH switch. Where this replacement switch differs is the terminal layout on the rear of the switch.

**Original EJ EH Switch**



**Terminal 1 – White**  
**Terminal 2 – Black**  
**Terminal 3 – Blue**

**MF0022 Replacement Switch**

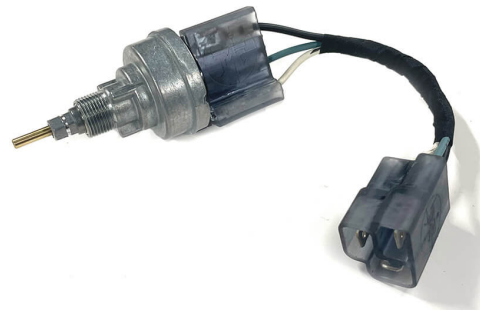


**Terminal 1 – White**  
**Terminal 2 – Black**  
**Terminal 3 – Blue**

**When fitting this switch, there are 2 options recommended by Mad Folk**

### **Option 1 – Patch Loom**

Use the Mad Folk optional patch loom. This will be the closest thing to a plug and play application. The patch loom will plug directly into your original harness with zero work required.



### **Option 2 – Use the Mad Folk Adapter Plug**

Use the Mad Folk optional connector and re-pin your wiring harness to suit. This connector will take the original terminals so a simple de-pin and re-pin is all that should be needed. 3x new terminals are supplied just in case you need to fix any damaged terminals in the process.



Thanks for shopping with Mad Folk Engineering.  
Please contact us direct if you have any concerns about the quality or fitment of this product.  
Email: [admin@madfolk.com.au](mailto:admin@madfolk.com.au)  
Mobile: 0411 206 398

